

Attachments to PCSA Architectural Guidelines
Updated May 18, 2021

1. **Color Palette:** All applications for exterior color changes will be considered on an individual basis. Not all colors will be approved. The requested color must be in the Benjamin Moore Williamsburg® Paint Color Collection and consistent with the surrounding colors of the applicant’s neighborhood. Some of the collection’s colors are only acceptable for interior use, while others are only suitable for trim, doors, and shutters, and not for the body of the house. The body or siding color of the house must be an earth tone. Unacceptable body or siding colors include, but are not limited to, such bright colors as baby blue, pink, cherry red, orange, neon, fluorescent, and other exotic hues, and also such dark colors as black, chocolate brown, and navy blue. The ARC must review and approve all exterior color changes to ensure the color choice is harmonious with the immediate neighborhood, and is not overly represented therein. The table below contains the palette of colors in the Benjamin Moore Williamsburg® Paint Color Collection.

Table 1. Benjamin Moore Williamsburg® Paint Color Collection

White and Tan Color Range		
Harwood Putty, CW-5	Capitol White, CW-10	Parish White, CW-15
Geddy White, CW-20	Williamsburg Stone, CW-25	Market Square Shell, CW-30
Palace Tan, CW-35	Lime White, CW-95	Prentis Cream, CW-100
Bracken Cream, CW-105	Calcite, CW-110	Cornice Tan, CW-115
Bracken Biscuit, CW-120	Brush Beige, CW-125	Coffeehouse Tan, CW-130
Timson Sand, CW-140	Brick House Tan, CW-145	Randolph Bisque, CW-185
Raleigh Tan, CW-190	Chowning's Tan, CW-195	Franklin White, CW-200
Galt Peach, CW-210	Byrd Beige, CW- 365	Wythe Tan, CW-415
Bruton White, CW-710		
Brown and Black Color Range		
Raleigh Sorrell CW-135	Everard Coffee, CW-150	Revolutionary Storm, CW-155
Dixon Brown CW-160	Coffeehouse Chocolate, CW-165	Tarpley Brown, CW-170
Tucker Chocolate CW-175	Bucktrout Brown, CW-180	Walnut, CW-240
Reid Brown CW-260	Charlton Brown, CW-265	Mopboard Black, CW-680
Lampblack CW-695	Bone Black, CW-715	
Gray Color Range		
Tavern Gray, CW-40	York Gray, CW-45	Tyler Gray, CW-50
Finnie Gray, CW-55	Cole Stone, CW-60	Gunsmith Gray, CW-65
Pelham Gray, CW-70	Randolph Stone, CW-75	Carter Gray CW,-80
Randolph Gray, CW-85	Tavern Charcoal, CW-90	Powell Smokehouse, CW-360
Pearl, CW-640	Powell Gray, CW-665	Ambler Slate, CW-685
Bracken Slate, CW-690	Slate, CW-700	Tucker Gray, CW-705
Bone Black, CW-715	Geddy Gray, CW-720	
Red Color Range		
St. George Red, CW-245	Carriage Red, CW-250	Palace Arms Red, CW-255
Nicholson Red, CW-270	Cochineal Red, CW-330	
Green Color Range		
Gloucester Green, CW-440	Burwell Green, CW-445	Greenhow Moss, CW-450

Attachments to PCSA Architectural Guidelines
Updated May 18, 2021

Timson Green, CW-470	Palmer Green, CW-475	Bassett Hall Green, CW-480
Burgess Green, CW-485	Levingston Green, CW-490	Russell Green, CW-495
Nicholson Green, CW-500	Windsor Green, CW-505	Waller Green, CW-510
Palace Green, CW-520	Raleigh Green, CW-525	Colonial Verdigris, CW-530
Buffet Green, CW-535	Goodwin Green, CW-555	
Blue Color Range		
Everard Blue, CW-575	Wetherburn's Blue, CW-580	Washington Blue, CW-630
Apollo Blue, CW-645	Chiswell Blue, CW-660	Brush Blue, CW-675
Yellow and Gold Color Range		
Ludwell White, CW-275	Moir Gold, CW-280	Gamboge, CW-285
English Ochre, CW-290	Sweeney Yellow, CW-370	Tavern Ochre, CW-375
Massicot, CW-380	Coffeehouse Ochre, CW-385	Bryan Ochre, CW-390
Governor's Gold, CW-395	Damask Yellow, CW-400	Chamber Yellow, CW-410
Wythe Gold, CW-420	Scrivener Gold, CW-430	Everard Gold, CW-435

2. Examples of Acceptable Fences:

5-ft x 8-ft Pressure Treated Pine Privacy Fence Panel



4-ft x 6-ft Black Powder-Coated Aluminum Decorative Fence Panel



Attachments to PCSA Architectural Guidelines
Updated May 18, 2021

3.5-ft x 8-ft) Pressure Treated Pine Picket Fence Panel

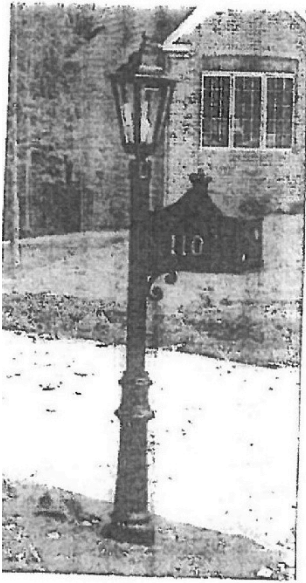


4-ft x 7.56-ft Ready-to-Assemble Keswick White Vinyl Panel

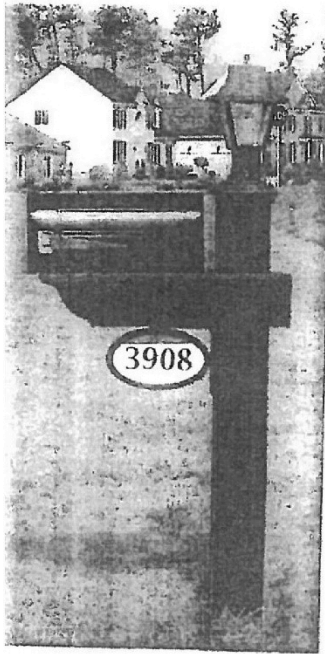


Because of the configuration of lots on *Cluster Way*, the only authorized design is a picket of 42" or less height painted white.

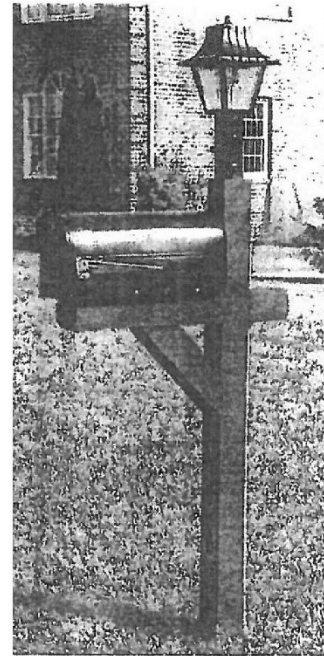
3. Examples of Acceptable Post Structures, Mailboxes and Post Light Structures:



Design "A" - Colonies
Section



Design "B" - Berkeley
Section



Design "C" - Essex,
Sussex, Powhatan
Woods, Westover,
Wythe and Clusters

4. Example of Acceptable Storage Building:



Heartland Madison Model – 10 feet x 12 feet

- Installed Item #: 293141
- Wall Frame: 2×4 framing provides greater strength and durability
- Door opening: 64-in., large door opening can easily accommodate lawn mowers with a 54-in. deck
- Side wall height: 6-ft. 6-in.
- Door hardware: Premium, 3 point locking handle. Features full length continuous hinges and 100% galvanized fasteners to prevent door sagging
- Threshold: Aluminum threshold included to protect your entryway
- Siding: Premium vinyl siding with 8 colors to choose from
- Limited Material Warranty: 15-year limited material warranty
- Labor Warranty: 5-year
- Common Size (w x d x h): 10-ft. x 12-ft. x 9-ft. 4-in.
- Actual Foundation Size (w x d): 10-ft. x 12-ft.